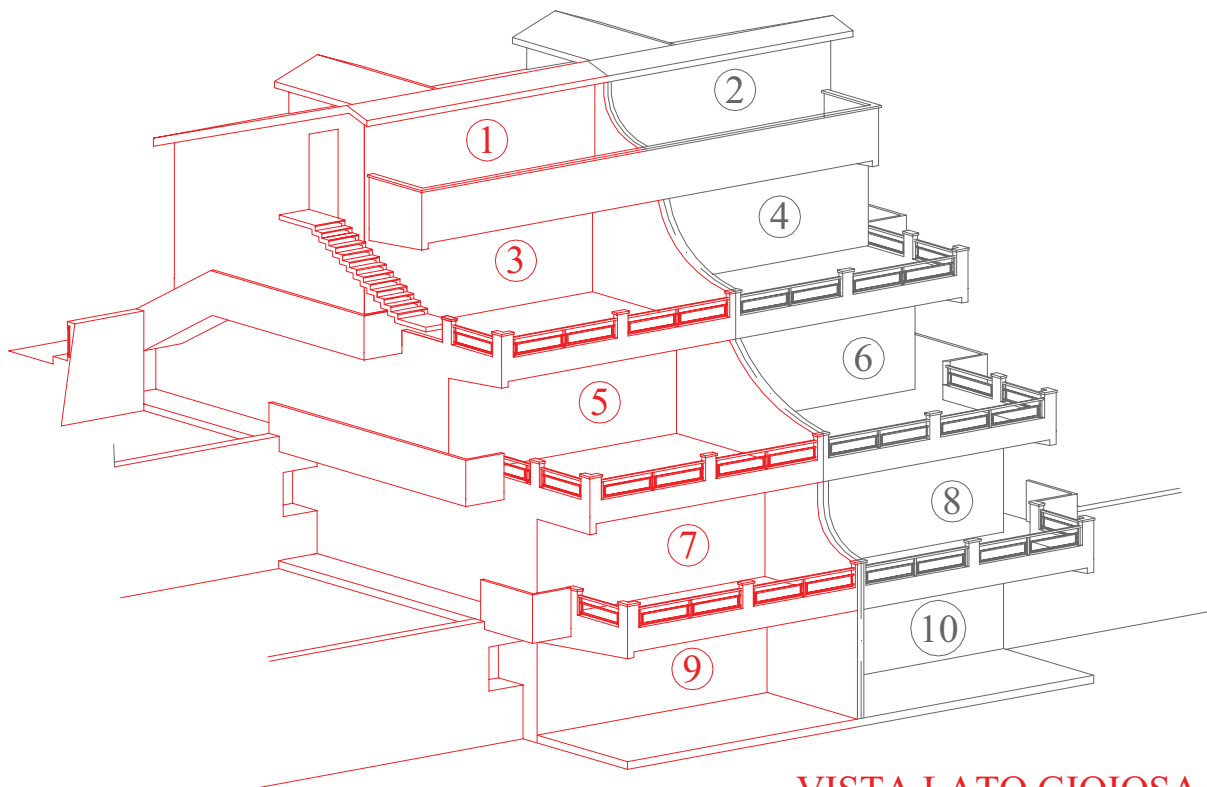
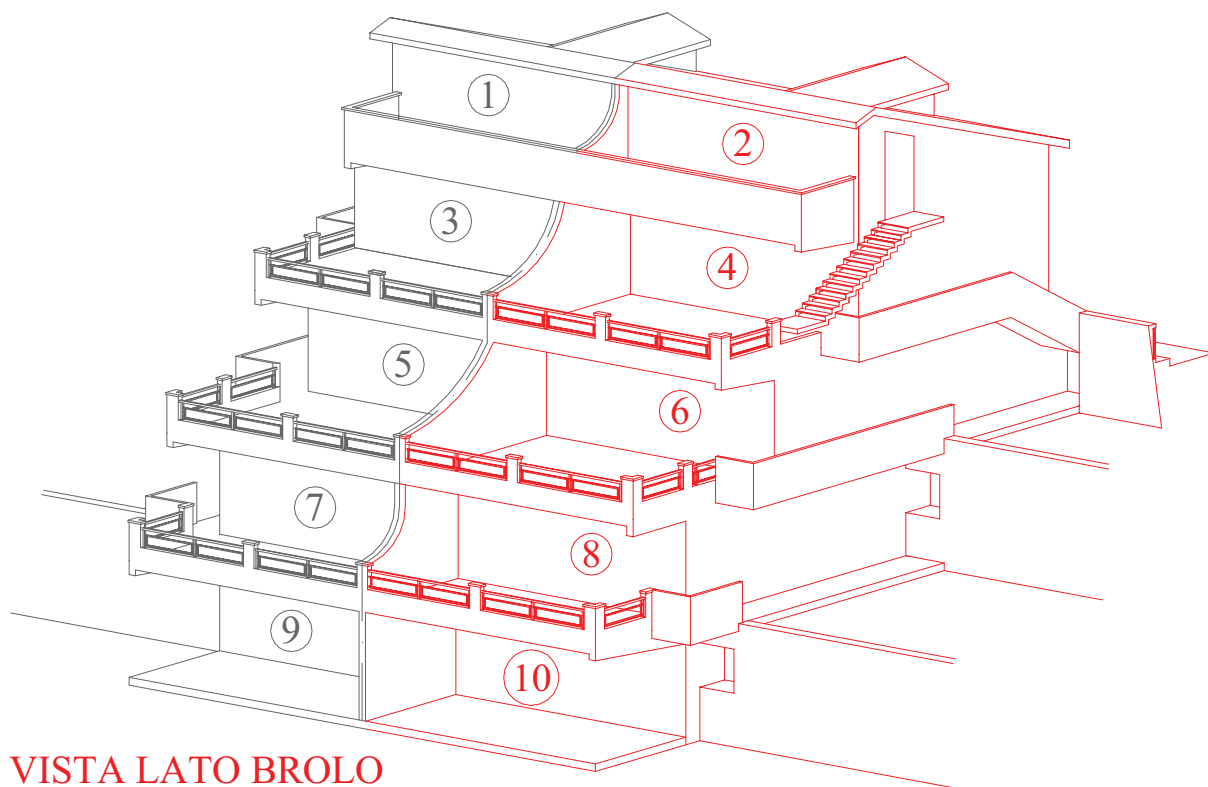


# MODULO B "FILICUDI"

## SCOMPOSIZIONE APPARTAMENTI



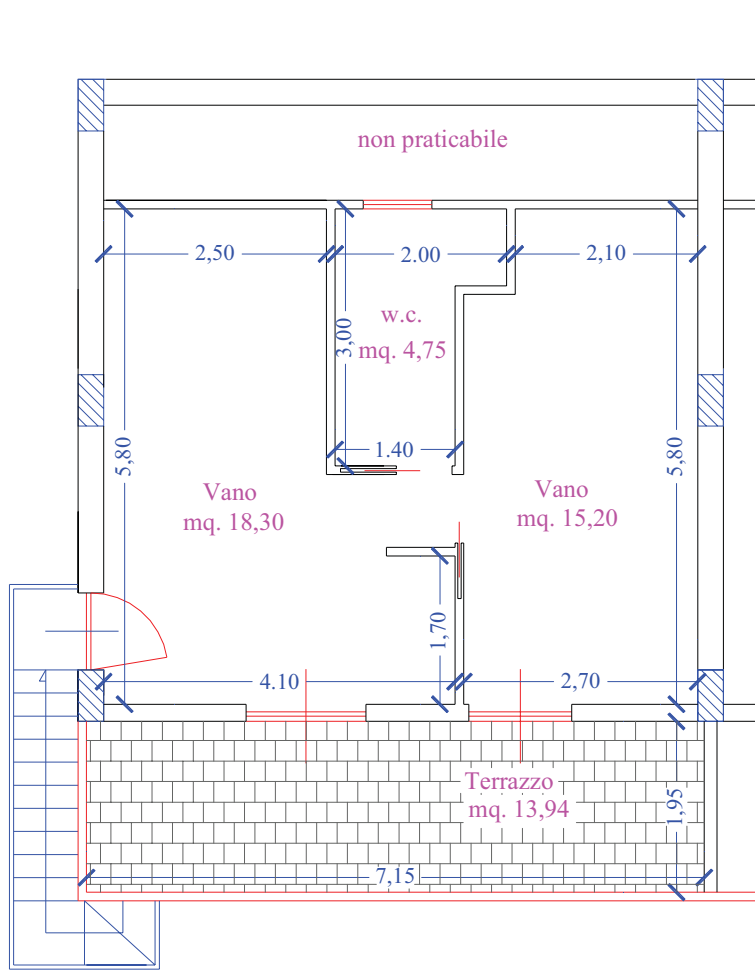
VISTA LATO GIOIOSA



VISTA LATO BROLO

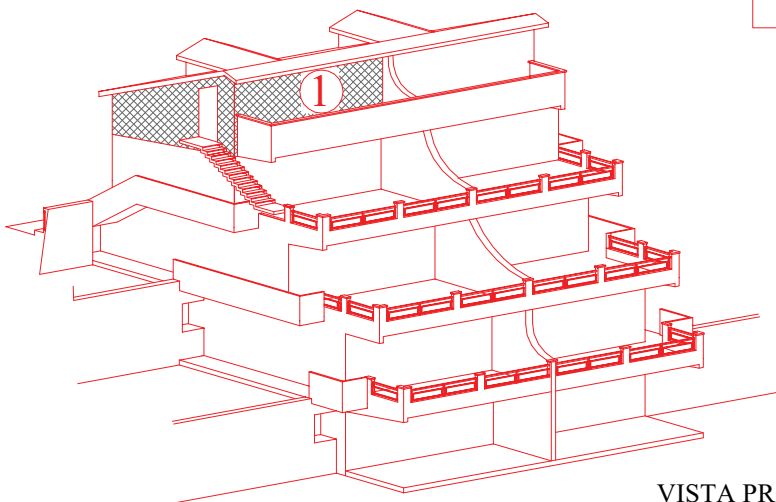
# MODULO B "FILICUDI"

## SOTTOTETTO n° 1 - (Lato Gioiosa)



### DATI TECNICI

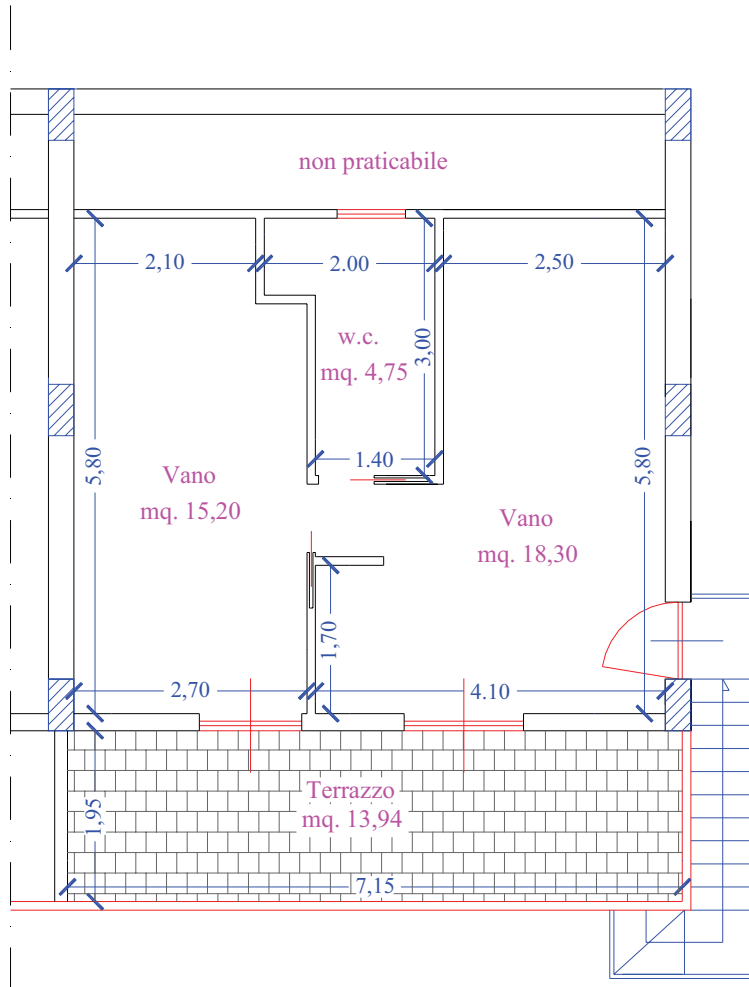
- superficie lorda	=	mq. 44,00
- terrazzi lordi	=	mq. 15,40
- posto auto	=	mq. 14,00



VISTA PROSPETTICA MODULO B - "FILICUDI"

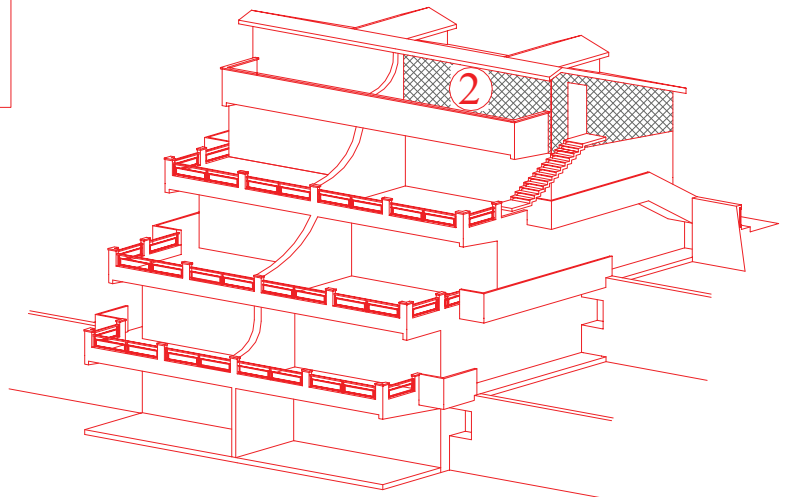
# MODULO B "FILICUDI"

## SOTTOTETTO n° 2 - (Lato Brolo)



### DATI TECNICI

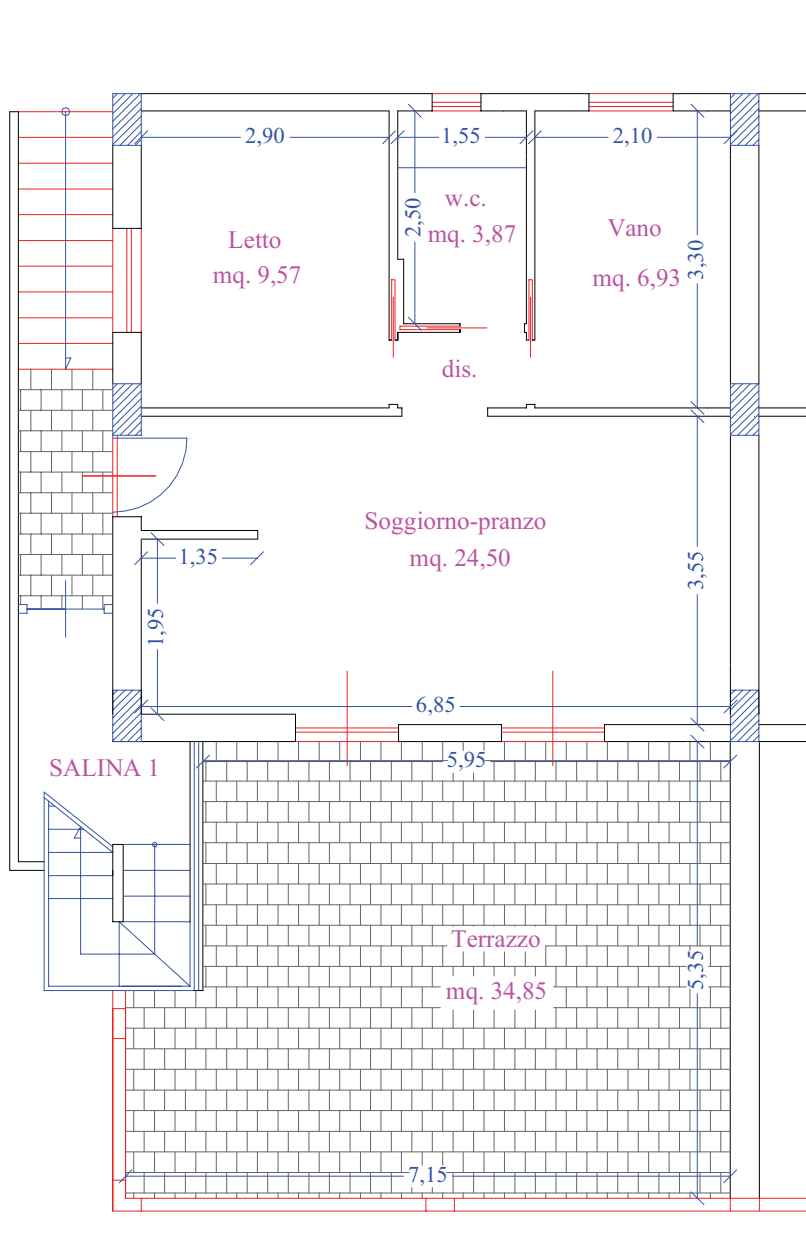
- superficie lorda = mq. 44,00
- terrazzi lordi = mq. 15,40
- posto auto = mq. 14,00



VISTA PROSPETTICA MODULO B - "FILICUDI"

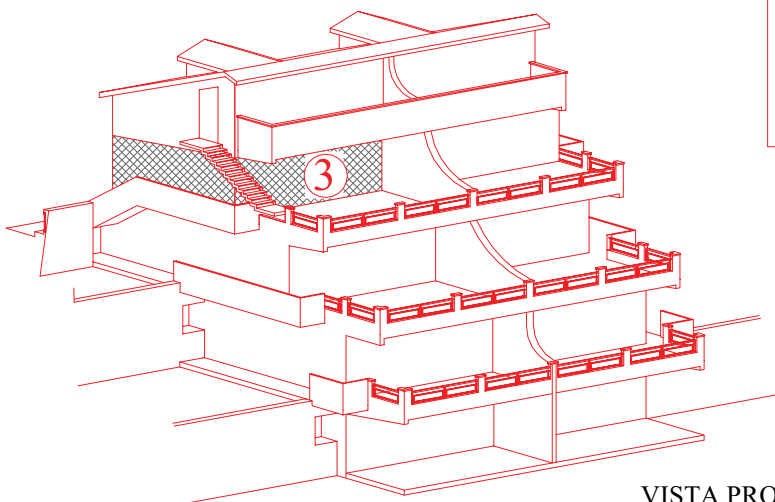
# MODULO B "FILICUDI"

## APPARTAMENTO n° 3 - (Lato Gioiosa)

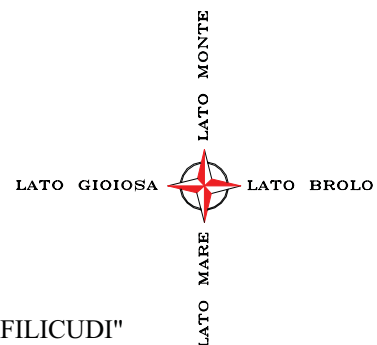


### DATI TECNICI

- superficie lorda	=	mq. 55,60
- terrazzi lordi	=	mq. 37,00
- posto auto	=	mq. 14,00

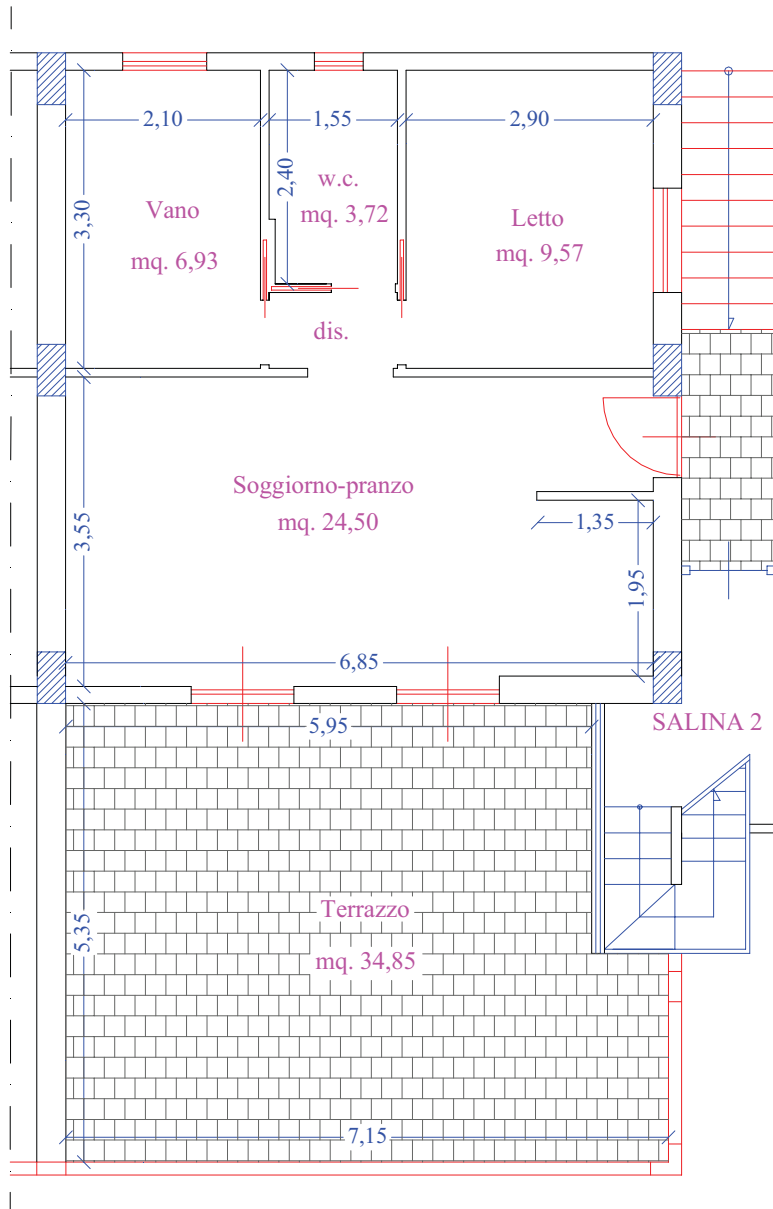


VISTA PROSPETTICA MODULO B - "FILICUDI"



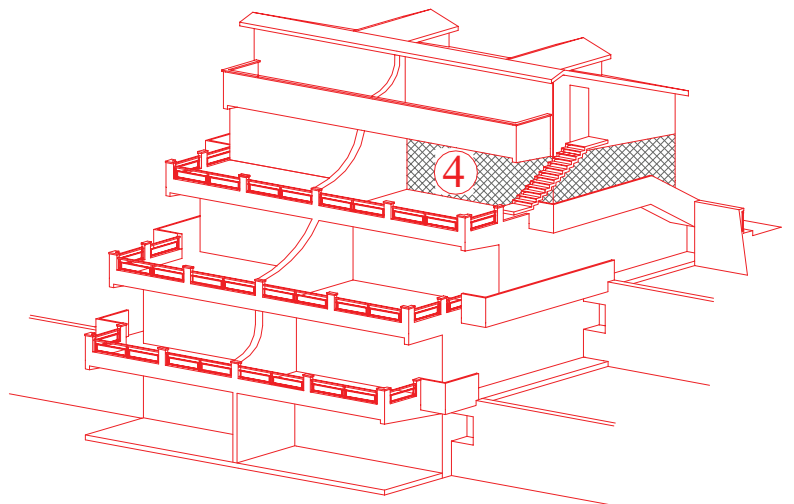
# MODULO B "FILICUDI"

## APPARTAMENTO n° 4 - (Lato Brolo)



### DATI TECNICI

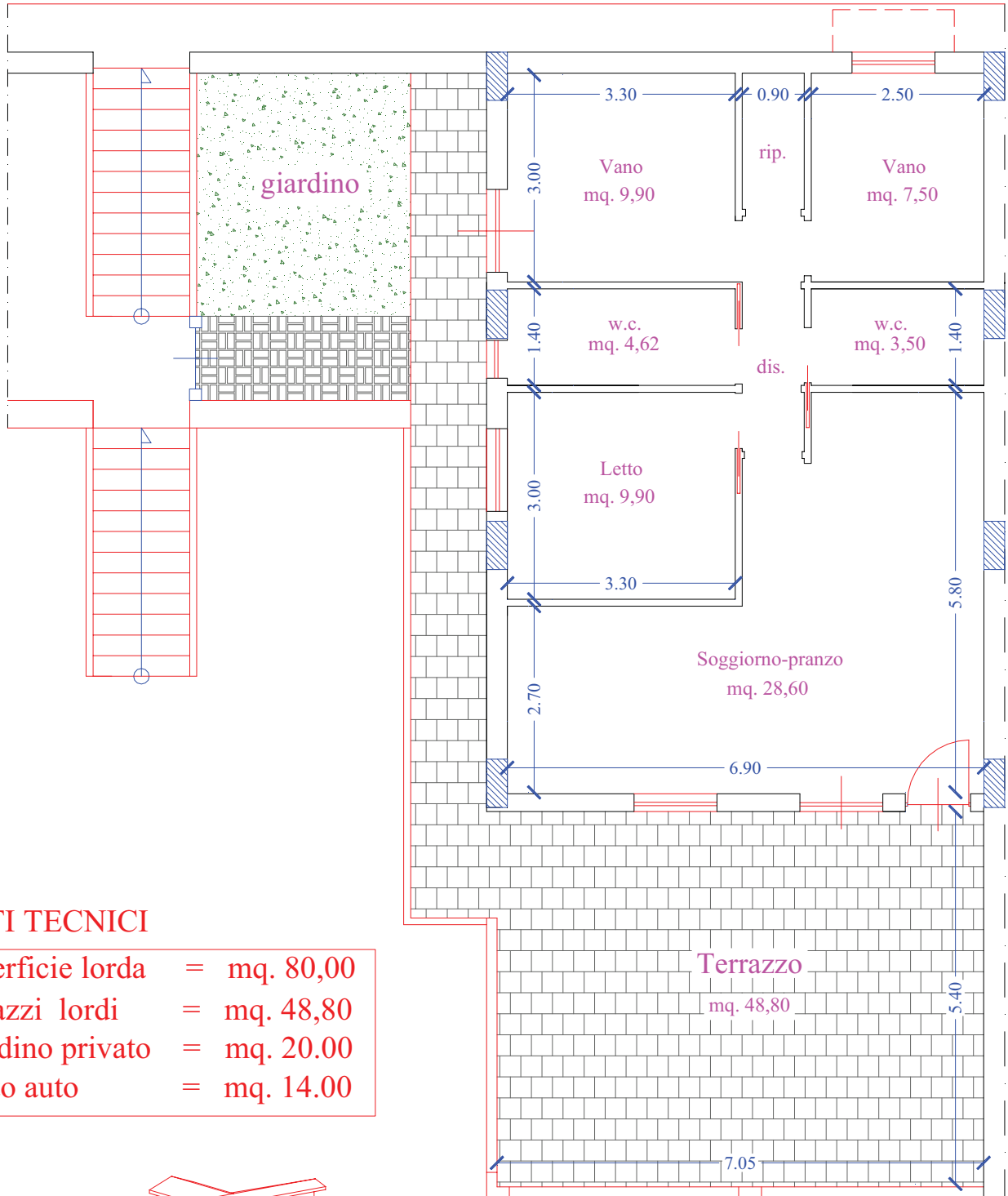
- superficie lorda = mq. 55,60
- terrazzi lordi = mq. 37,00
- posto auto = mq. 14,00



VISTA PROSPETTICA MODULO B - "FILICUDI"

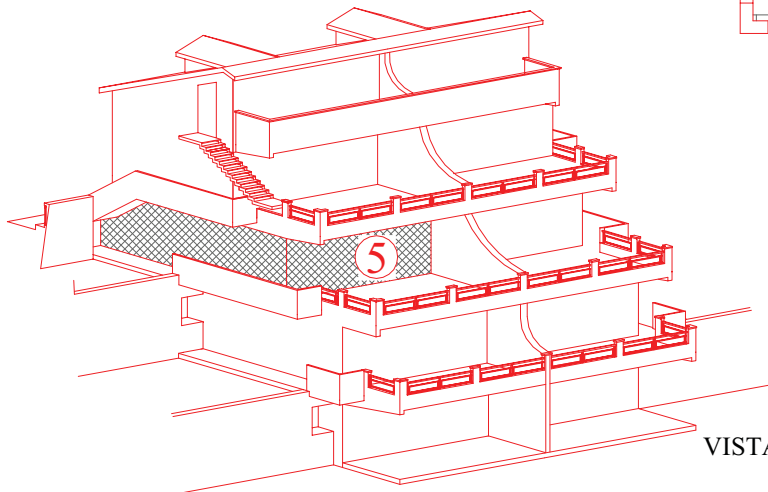
# MODULO B "FILICUDI"

## APPARTAMENTO n° 5 - (Lato Gioiosa)



### DATI TECNICI

- superficie lorda = mq. 80,00
- terrazzi lordi = mq. 48,80
- giardino privato = mq. 20,00
- posto auto = mq. 14,00

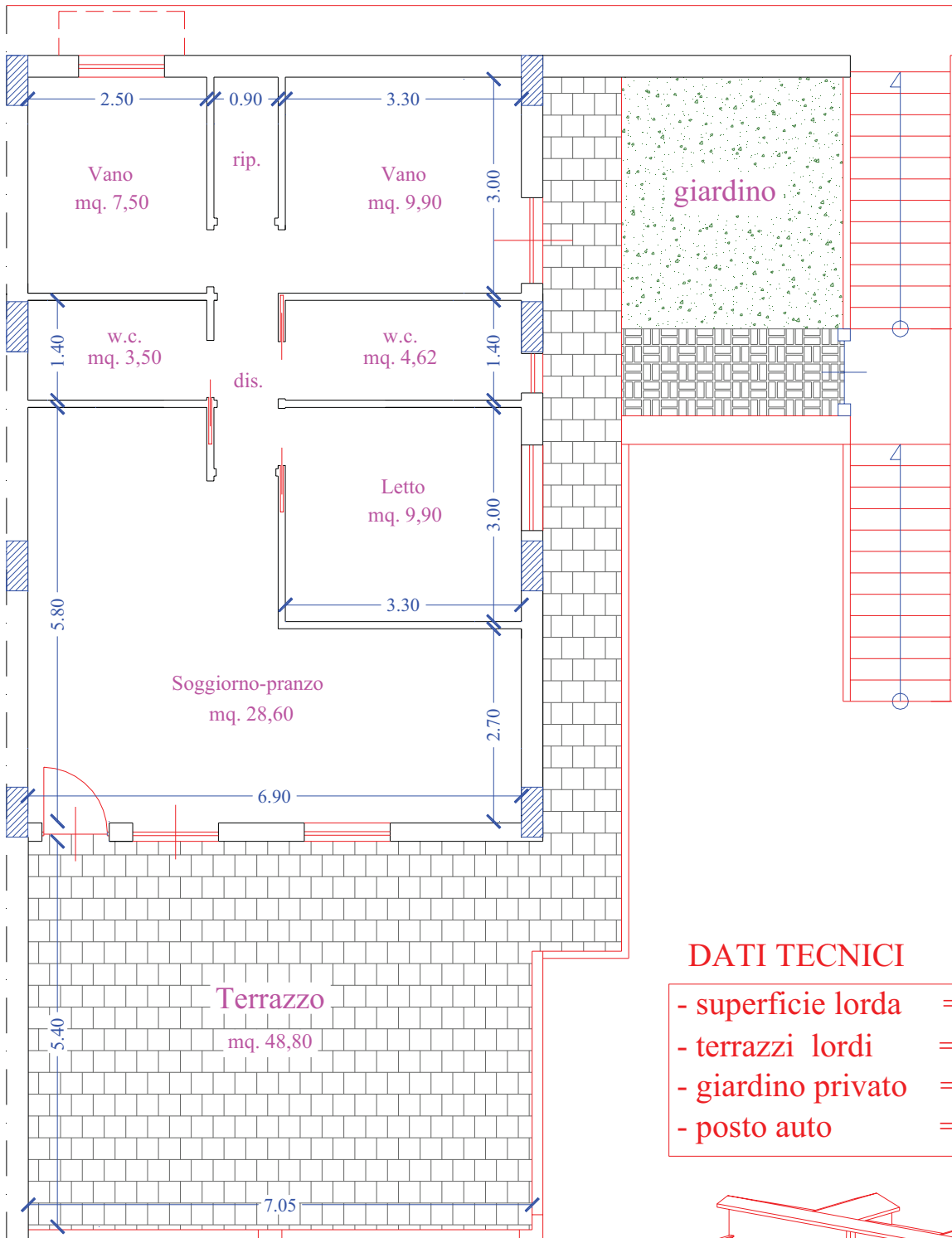


VISTA PROSPETTICA MODULO B - "FILICUDI"



# MODULO B "FILICUDI"

## APPARTAMENTO n° 6 - (Lato Brolo)

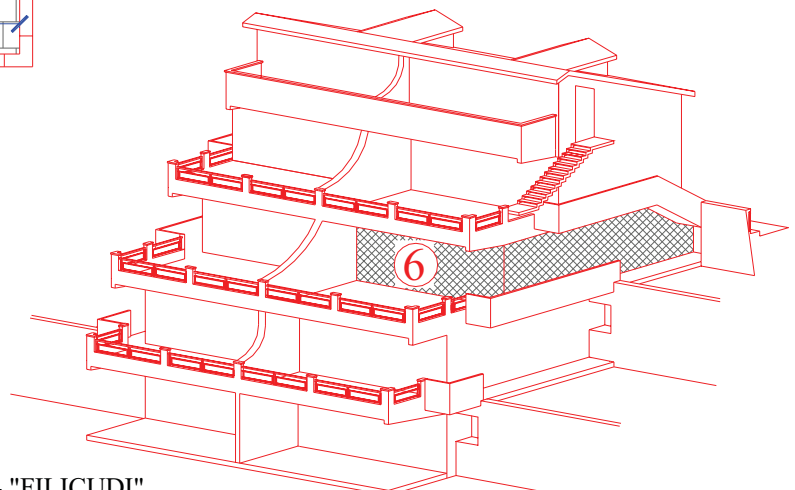


### DATI TECNICI

- superficie lorda = mq. 80,00
- terrazzi lordi = mq. 48,80
- giardino privato = mq. 20,00
- posto auto = mq. 14,00

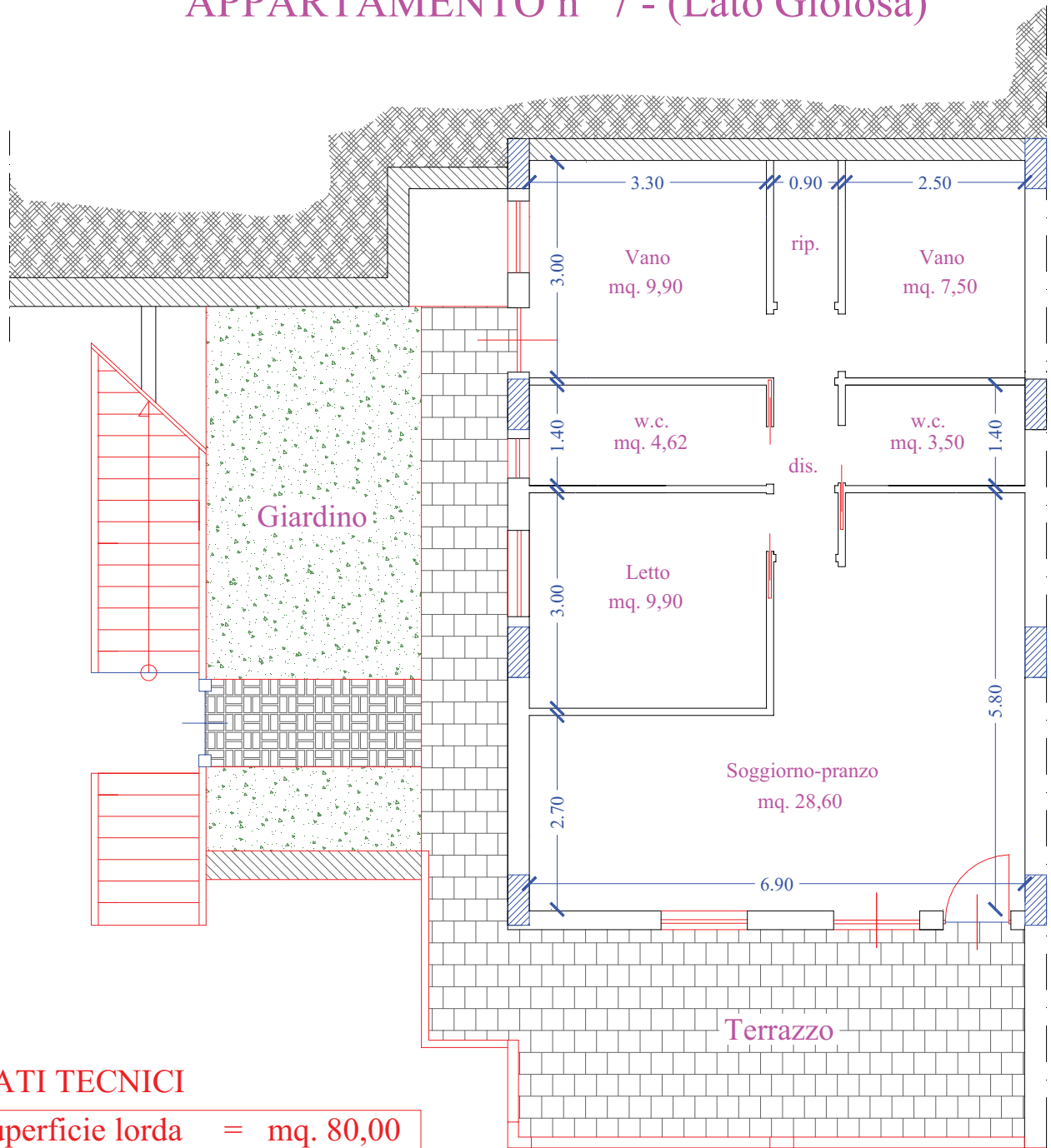


VISTA PROSPETTICA MODULO B - "FILICUDI"



# MODULO B "FILICUDI"

## APPARTAMENTO n° 7 - (Lato Gioiosa)

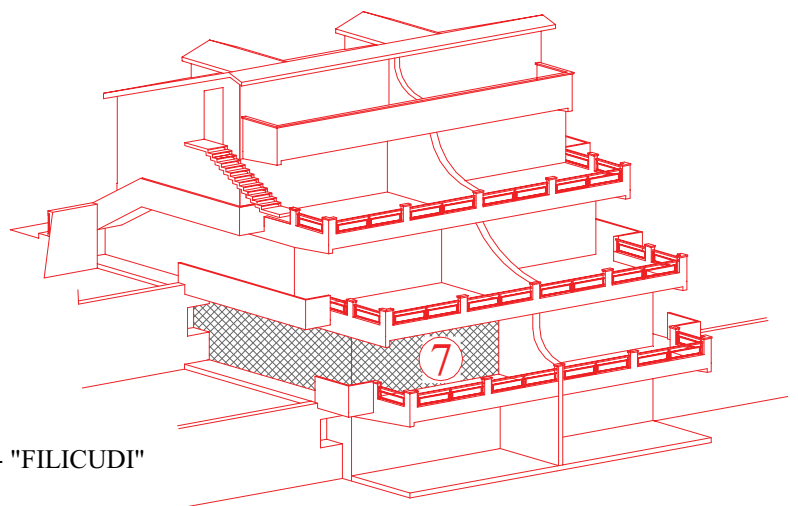


### DATI TECNICI

- superficie lorda = mq. 80,00
- terrazzi lordi = mq. 25,00
- giardino privato = mq. 31,80
- posto auto = mq. 14,00



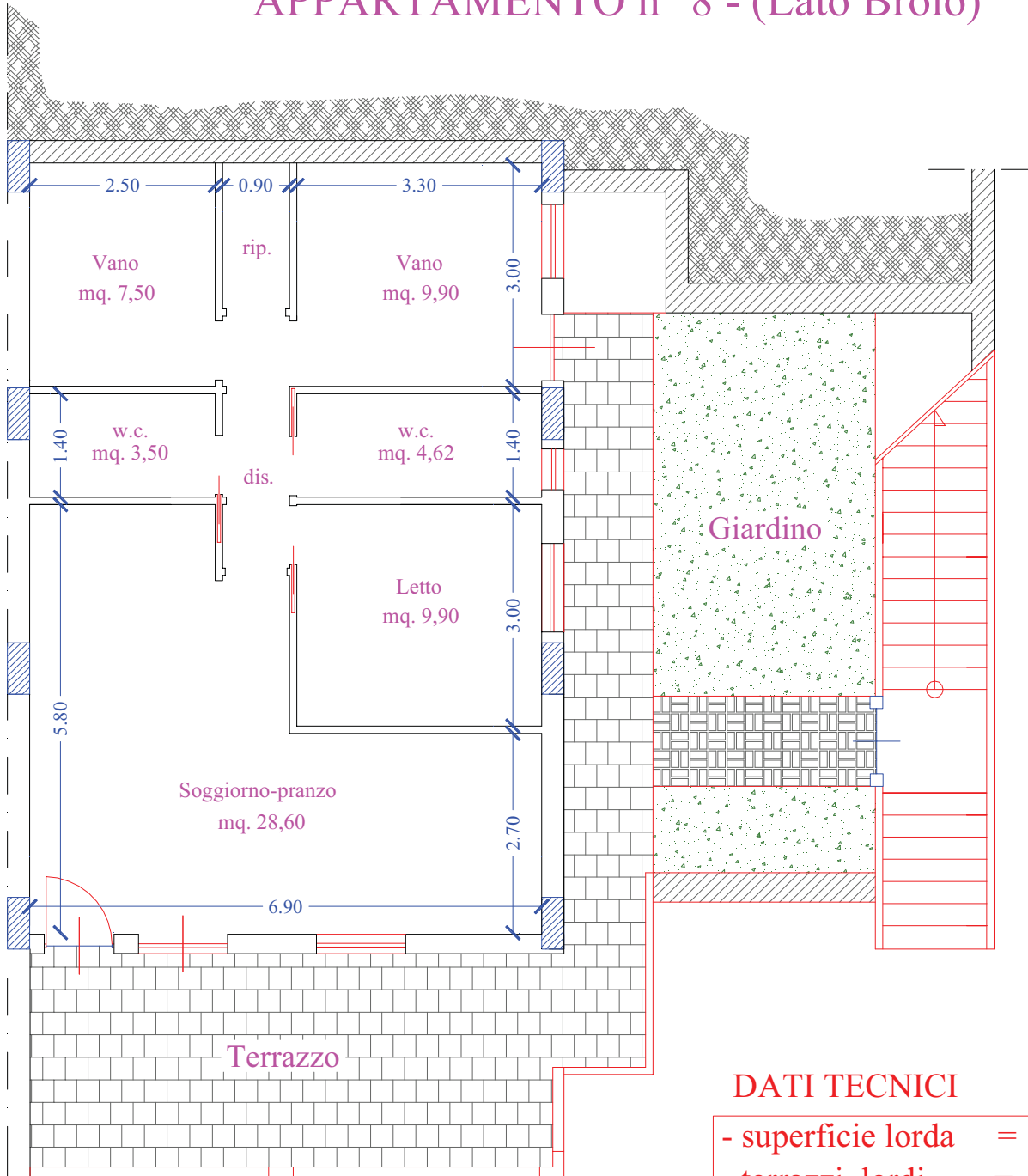
VISTA PROSPETTICA MODULO B - "FILICUDI"





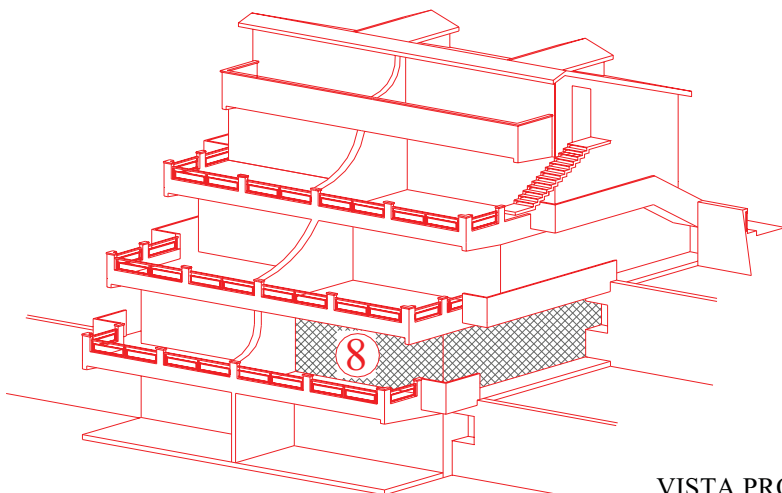
# MODULO B "FILICUDI"

## APPARTAMENTO n° 8 - (Lato Brolo)



### DATI TECNICI

- superficie lorda = mq. 80,00
- terrazzi lordi = mq. 25,00
- giardino privato = mq. 31,80
- posto auto = mq. 14,00



VISTA PROSPETTICA MODULO B - "FILICUDI"

